

FLOODLIGHTS HYPERION



General Data:

Construction:

Body UV Stabilized high Impact
PC

Lens UV Stabilized high Impact
Clear Lens

Ballast Available with low loss
Magnetic or high Efficiency
Electronic

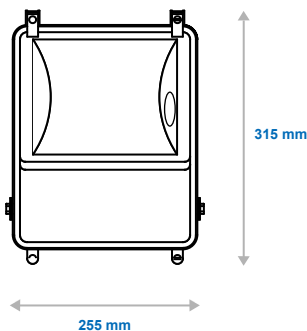
Mounting Bracket Mild Steel Galvanized with
Grey Epoxy Paint

IP Rating IP65

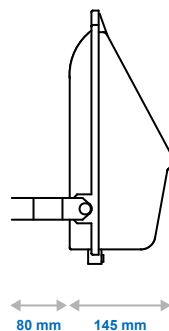
Typical Applications:

Commercial outdoor flood lighting application Outdoor Lighting

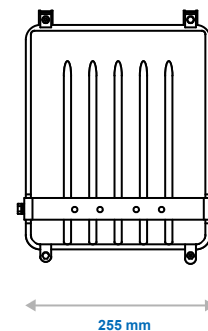
Front View:



Side View:



Back View:



FLOODLIGHTS HYPERION



Options:

- .../CCG (Magnetic Ballast)
- .../ECG (Electronic Ballast)
- .../HID/MV (Metal Halide)
- .../HID/HPS (High Pressure Sodium)

Product Information:

Product Code	LampWatt's	H (mm)	L (mm)	W (mm)	(Kg)
HYP-226CFL	2 x 26W	300	230	130	TBA
HYP-142CFL	42W	300	230	130	TBA
HYP-170HID	70W	300	230	130	TBA

Complete your Project:

Please select the items you require and we will be in touch

Cables and Wires:

Indoor
Outdoor
General
Other
Let an ACTOM
Specialist Contact you

Lighting:

Indoor
Outdoor
General
Other
Let an ACTOM
Specialist Contact you

Transformers (Distribution):

Indoor
Outdoor
General
Other
Let an ACTOM
Specialist Contact you

Accessories:

Indoor
Outdoor
General
Other
Let an ACTOM
Specialist Contact you

Specific Information:

Address: 4 Branch Road, Germiston 1401, P.O. Box 678, Germiston 1400

For more Information on this Product Please Send us the Following

Product Information:

Product Name:

Quantity:

Project Name:

Date the Product is required:

Your Contact Information:

Name and Surname:

Company:

Email:

Phone Number:

Province:

Thank You

For having a Look at this Product

Please send this PDF back to us with all your Information

Scan the QR Code to visit our Website:

